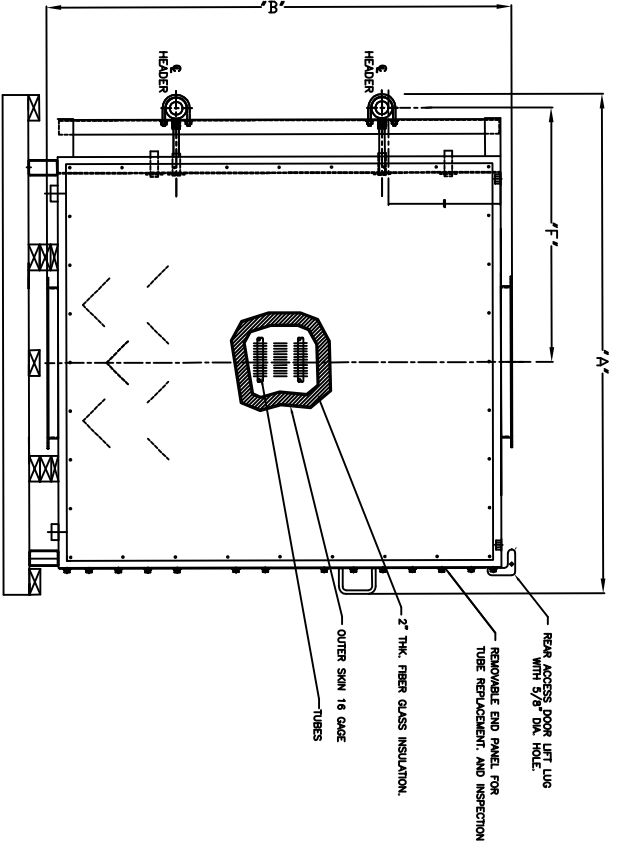
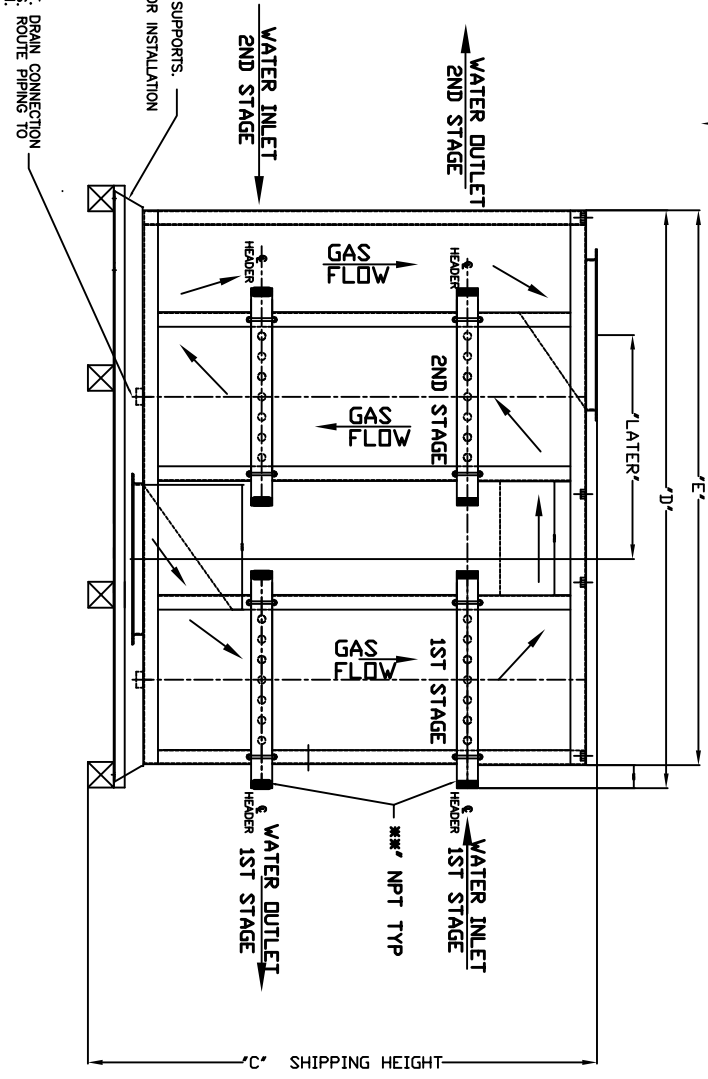
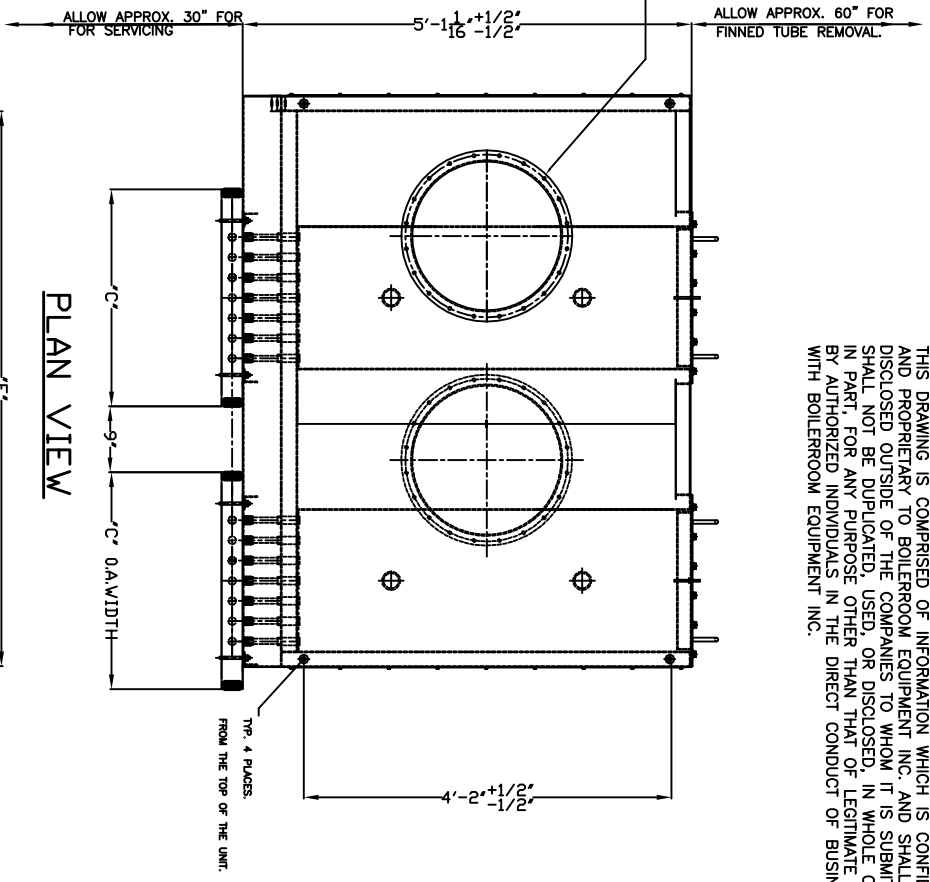


THIS DRAWING IS COMPRISED OF INFORMATION WHICH IS CONFIDENTIAL AND PROPRIETARY TO BOILERROOM EQUIPMENT INC. AND SHALL NOT BE DISCLOSED OUTSIDE OF THE COMPANIES TO WHOM IT IS SUBMITTED, AND SHALL NOT BE DUPLICATED, USED, OR DISCLOSED, IN WHOLE OR IN PART, FOR ANY PURPOSE OTHER THAN THAT OF LEGITIMATE REFERENCE BY AUTHORIZED INDIVIDUALS IN THE DIRECT CONDUCT OF BUSINESS WITH BOILERROOM EQUIPMENT INC.



PERFORMANCE DATA ( FIRST STAGE )		PERFORMANCE DATA ( SECOND STAGE )	
WATER FLOW: ** PPH	WATER TEMP IN: ***F OUT: ***F PRESSURE DROP: ** PSI	WATER FLOW: ** PPH	WATER TEMP IN: **F OUT: **F PRESSURE DROP: ** PSI
GAS FLOW: ** PPH	GAS TEMP IN: ***F OUT: ***F	GAS FLOW: ** PPH	GAS TEMP IN: **F OUT: **F
TOTAL RECOVERY OF COMBINED UNITS: ** BTU / HOUR		TOTAL GAS SIDE PRESSURE DROP : ** IN WC	

DESIGN DATA	
MODEL No.: HS-2STG-BOSS-***	AS.M.E. SECTION VIII, DIVISION 1, "U" STAMP
DESIGN: 600 PSI @ 600 F	WEIGHT EMPTY --- APPROX **
	WEIGHT FLOODED --- APPROX **

- NOTES
- REFER TO OPERATION AND MAINTENANCE MANUAL FOR UNIT INSTRUCTIONS.
  - UNIT IS EQUIPPED WITH PLENUMS TO DIVERT WATER THROUGH 1-1/2" DRAIN CONNS.
  - UNIT NOT DESIGNED FOR STACK LOADING.
  - EXTERNAL PIPING NOT TO BE SUPPORTED BY UNIT WATER MANIFOLD PIPE.
  - TWO SAFETY RELIEF VALVES INCLUDED SET PRESSURE 250 PSI (MAX PUMP PRESSURE 225 PSI) MAX CAPACITY \*\* PPH EACH
  - TO BE MOUNTED IN FIELD BY OTHERS SEE O & M MANUAL
  - PAINT RUSTOLEUM HIGH HEAT BLACK # 7778
  - MATERIALS OF CONSTRUCTION 1ST STAGE TUBES--\*\* HEADERS-- CARBON STEEL SA-106B \*\*\* XXH CASING--\*\*
  - MATERIALS OF CONSTRUCTION 2ND STAGE TUBES--\*\* HEADERS-- CARBON STEEL SA-106B \*\*\* XXH CASING--\*\*
  - UNIT NOT DESIGNED WITH A DAMPER THAT HAS A BLADE THAT MUST TRAVEL INSIDE THE GAS CONNECTION FLANGES. CONSULT FACTORY FOR SPECIAL APPLICATIONS.
  - JOB INFORMATION
  - THIS ORDER IS FOR ONE (\*\*) UNIT
  - CUSTOMERPURCHASE ORDER No: LATER
  - CUSTOMER: \*\*
  - RELEASED FOR INFORMATION
  - RELEASE FOR FABRICATION WILL BE CONSIDERD AS CUSTOMERS VERIFY ALL PERFORMANCE PARAMETERS UTILIZED IN THE GENERATION OF THE UNIT SIZING AS ACCURATE
  - OPTIONAL EQUIPMENT WITH THIS ORDER \*\*

REVISION TABLE		
0	ISSUED FOR INFORMATION	**
REV	DESCRIPTION	DATE

**BOILERROOM EQUIPMENT, INC.**

637 DONOHUE ROAD SUITE B  
LATROBE, PA 15650  
Phone 724-837-7001 Fax 724-837-7003

PROJECT: \*\*

2 STG BOILER ECONDMIZER

CUSTOMER: \*\*

MODEL No. HS-2STG-BOSS-\*\*

JOB NO. LATER	DWG NO. **	REV 0
SCALE NONE	DATE **	DRAWN BY: JWR